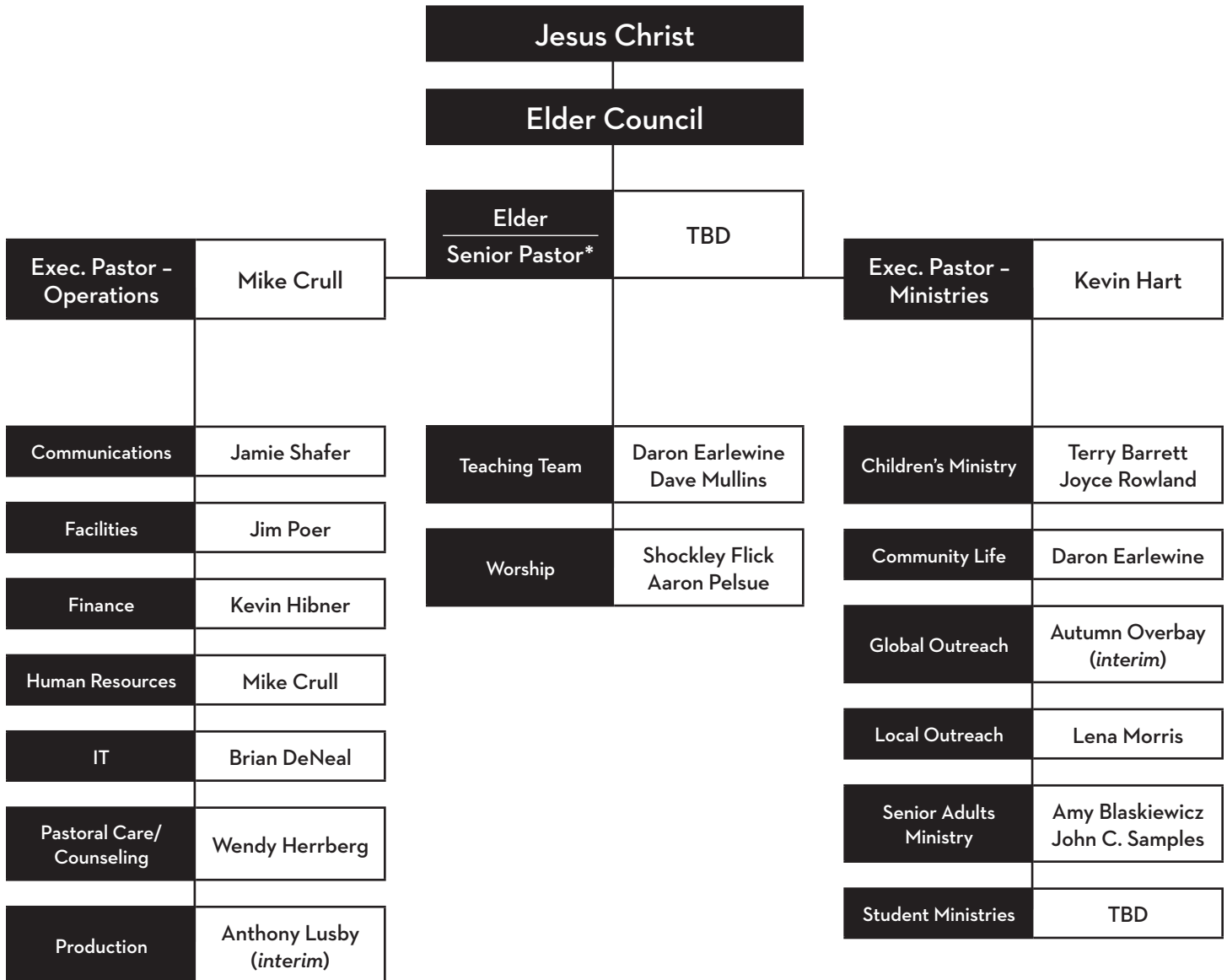


# E91 Organizational Chart

(Revised February 6, 2012)



The Elders discern the executive structure of the church through  
Ecclesiastes 4:12 and Matthew 17:1.

*Though one may be overpowered, two can defend themselves. A cord of three strands is not quickly broken.*

—Ecclesiastes 4:12

*After six days Jesus took with him Peter, James and John the brother of James, and led them up a high mountain by themselves.*

— Matthew 17:1

\* Senior Pastor will function as Elder and first among equals to lead and develop, in concert with the executive pastors and the remaining organizational structure